

Item #1041730R (Core Blower Assembly), 1040403R (Motor Kit), and 1020003R (Wheel)

THIS PROCEDURE MUST BE PERFORMED BY A QUALIFIED TECHNICIAN

KIT INCLUDES

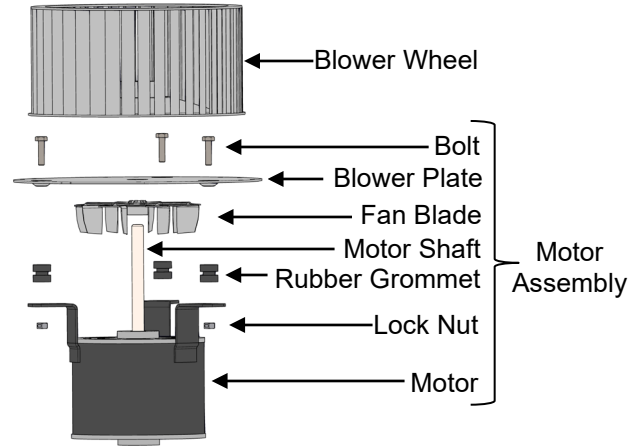
Item #1041730R includes both kits listed below.

Replacement Motor Kit (1040403R) Includes:

- Motor Assembly
- Capacitor
- Capacitor Boot
- Label Fan Motor Direction

Replacement Wheel (1020003R) Includes:

- Blower Wheel 9 1/8" X 4 1/4"



INSTALLATION



WARNING

HAZARDOUS VOLTAGE: Risk of electric shock. Can cause injury or death. System may be connected to more than one branch circuit. Disconnect power to all circuits before servicing.

1. De-energize the system and remove the electrical panel cover to gain access to the electrical compartment.
2. Remove the two (2) screws from the 75VA transformer (Figure 1) and set aside.

NOTE: Use caution when working inside the electrical compartment of the system as the wiring harnesses can be damaged by sharp edges and mishandling.

3. Cut tie wraps securing the black and white wires to core blower and disconnect.
4. Remove the capacitor (Figure 1) from the electrical panel center insert and disconnect the brown wires. Set the capacitor to the side.
5. Remove screw and un hinge the processor control board (Figure 1) to gain access to the low voltage panel (Figure 2).
6. Remove the low voltage panel (Figure 2) by taking out the four (4) screws and set aside.
7. Remove the wire raceway (Figure 2) by taking out the three (3) screws and set aside.
8. Remove the six (6) screws on the electrical panel center insert (Figure 3) and remove the panel.
9. Remove the screws securing the core blower assembly (Figure 3). Remove the motor assembly by turning to the side. Make sure the element wires do not get damaged in the process.

FIGURE 1

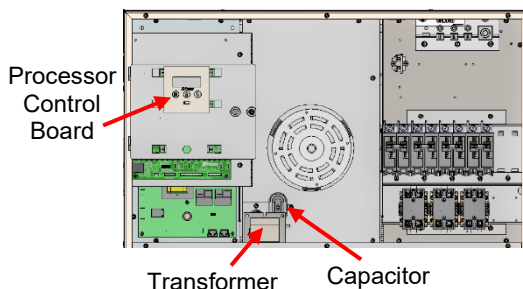


FIGURE 2

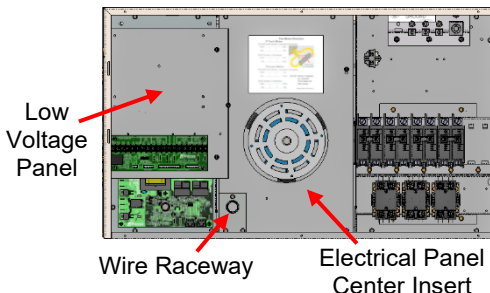
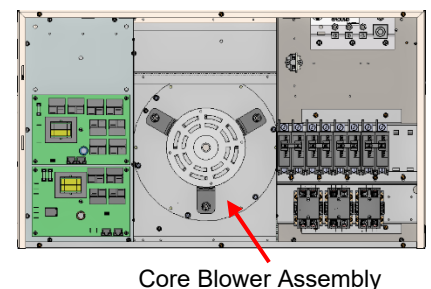


FIGURE 3



NOTE: If replacing the entire assembly, go to Step 13.

10. Using 5/32" Hex wrench, loosen the two (2) set screws on the blower wheel.
11. Remove the blower wheel from motor shaft.
12. Slide the new blower wheel onto the motor shaft ensuring the set screws are aligned with the two (2) flat faces of the shaft. Leave 1/4" gap (Figure 4) between the wheel and mounting plate. Tighten set screws to 120 in/lbs.
13. Spin the wheel by hand to ensure the wheel is not touching the blower plate.
14. Insert new core blower assembly, rotating it so that the flat edge of the core blower plate (Figure 5) is towards the top. The blower motor wiring should be off the lower right side of the motor. Secure in place using previously removed hardware.

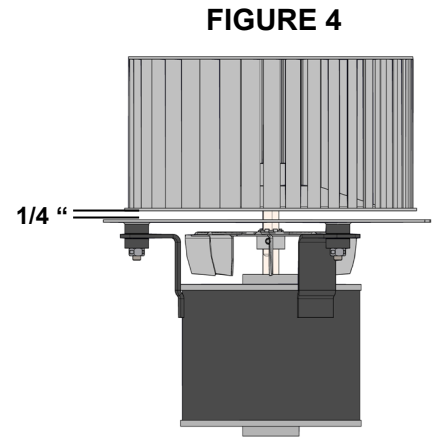


FIGURE 4

NOTE: When securing the blower plate reference Figure 6. Systems built prior to 2007 use a different mounting assembly.

15. Secure the wire raceway.
16. Reinstall the electrical panel center insert being careful of all wiring.
17. Adhere the Fan Motor Direction label on the panel center insert (Figure 2). Verify reversing connection is correctly selected for the motor install.
18. Mount the capacitor and attach the ground (green) wire to the electrical panel center insert with the mounting screw.
19. Slide the rubber capacitor boot onto the brown wires.
20. Attach the brown wires to the capacitor and secure the boot over the capacitor terminals. Verify the capacitor is correct for the blower motor installed.

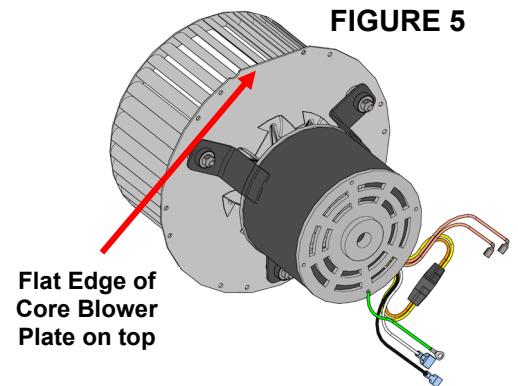


FIGURE 5

MOTOR MANUFACTURER	CAPACITOR
FASCO	4 mfd, 370V
GENTEQ	4 mfd, 370V
PACKARD	3 mfd, 370V
JAKEL/P-TECH	3 mfd, 370V

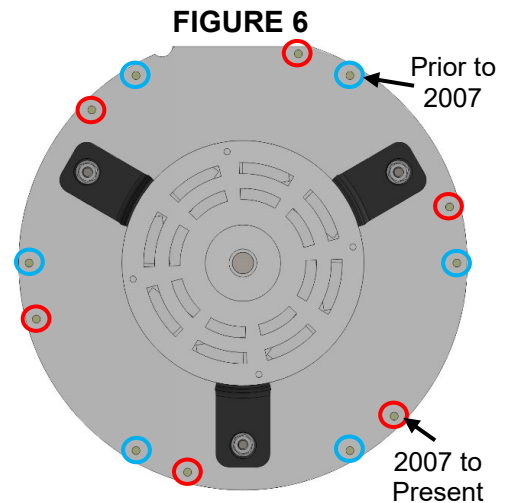


FIGURE 6

21. Connect the blue wire from the system to the white wire on the blower.
22. Connect the black/yellow wire from the system to the black wire on the blower.
23. Secure the low voltage panel into place, hinge the processor control board back in position and secure.
24. Secure the 75V transformer in the base of the electrical panel. Verify the transformer jumper ring terminal is secured with the left transformer screw.
25. Route and secure the core blower wiring in a manner that prevents damage once the system is energized.
26. Energize the system and verify motor direction.
27. Reinstall the electrical panel cover.